




ISTRUZIONI PER IL DOWNLOAD DEL DOSSIER COMPLETO DEL SITO

1

home page del sito www.europan-europe.eu

THEMATIZED PROJECTS | IMPLEMENTATION PROCESSES | EXCHANGES | PUBLICATIONS | SESSIONS INFO | ABOUT | CREDITS |    EN | FR

EUROPAN 12 TOPIC | SITES | RULES | **REGISTRATION** | ENTRY | CALENDAR | JURIES | QUESTIONS | CONTACTS | NATIONAL WEBSITES

NOT REGISTERED YET?

Registration on one site costs 150€.
This includes the access to the complete site folder download section and also covers the printing costs now taken in charge by the National Secretariats.

Online payment is done via Paypal.
You can modify the team form and register for an additional site after complete registration (registration for an additional site costs 50€.)

TEAM REPRESENTATIVE / TEAM INFORMATION

FIRST NAME
NAME
SELECT FUNCTION
DATE OF BIRTH MM DD YYYY
SELECT COUNTRY
TEAM REPRESENTATIVE / TEAM ADDRESS
ADDRESS
CITY ZIP CODE
SELECT COUNTRY

SITE
Please note you cannot change site once your choice is confirmed!

SELECT A SITE

TERMS AND CONDITIONS
☐ I read and agree with the terms and conditions of the Europan 12 Rules

SUBMIT

ALREADY REGISTERED




In your personal area you can:

- Finalize your registration
- Download the declaration of Authorship and Partnership
- Register for an additional site
- Upload your entry

EMAIL
PASSWORD
Password forgotten?
LOGIN

EFFETTUA IL LOGIN

2

THEMATIZED PROJECTS | IMPLEMENTATION PROCESSES | EXCHANGES | PUBLICATIONS | SESSIONS INFO | ABOUT | CREDITS |    EN | FR

TOPIC | **SITES** | RULES | **REGISTRATION** | ENTRY | CALENDAR | JURIES | QUESTIONS | CONTACTS | NATIONAL WEBSITES | SIGN OUT

Hello xxxxx YYYYYYYY!

CLICCA QUI

ADD A TEAM MEMBER +
CHANGE THE TEAM ADDRESS +
REGISTER FOR AN ADDITIONAL SITE +

PLEASE NOTE

Your **team email address** has to be valid until the end of the competition for the Europan structures to be able to stay in contact with you.

The **Team Representative** must be an architect with a qualification from a European country or must have the architect status under the laws of a European country. He/she must hold a university degree or equivalent from a European university or school of architecture recognized by Europe. In specific cases (see synthetic site file), the team representative can be an architecture, urban or landscape professional (architect, landscaper, urban planner, architect-engineer) with a qualification from a European country. In this case the team shall necessarily include at least one architect among the associates.

The team representative is the sole contact with the national and European secretariats.

The **Associates** are considered to be co-authors of the project and are credited as such in all national and European

YOUR REGISTRATION

TEAM +
SITES +

3

THEMATIZED PROJECTS | IMPLEMENTATION PROCESSES | EXCHANGES | PUBLICATIONS | SESSIONS INFO | ABOUT | CREDITS |   

EN | FR

TOPIC | **SITES** | RULES | REGISTRATION | ENTRY | CALENDAR | JURIES | QUESTIONS | CONTACTS | NATIONAL WEBSITES

SIGN OUT



THE SITES ARE CONNECTED TO THE FOLLOWING THEMES

DYNAMIC URBAN PLATFORMS +

HERITAGE OF THE FUTURE +

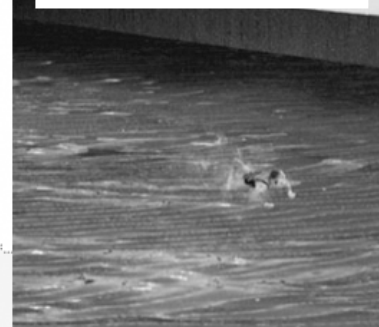
FROM MONO-LARGE TO MULTI-MIX +

ECORHYTHMS +

IN-BETWEEN TIME +

NETWORKED TERRITORIES +

ACTUAL REGISTRATIONS PER SITE +



4

THEMATIZED PROJECTS | IMPLEMENTATION PROCESSES | EXCHANGES | PUBLICATIONS | SESSIONS INFO | ABOUT | CREDITS |   

EN | FR

TOPIC | **SITES** | RULES | REGISTRATION | ENTRY | CALENDAR | JURIES | QUESTIONS | CONTACTS | NATIONAL WEBSITES

SIGN OUT

Venezia (IT)

DATA

**Category** urban/architectural**Team representative** Architect**Location** Venezia - Mestre Station Area**Population** City 269,331 inhab. - Mestre conurbation 181,718 inhab.**Strategic site** ±300 ha - **Site of project** 6.5 ha + 2 ha + 0.6 ha**Site proposed by** Councilor for Urbanism, Ezio Micelli**Owner of the site** Rete Ferroviaria Italiana SpA (RFI), FS Sistemi Urbani (FSSU), Favretti Srl, Comune di Venezia**Commission after competition** Starting from the the award-winning proposals, the municipality, through a dedicated Committee and eventually through working groups with the teams, will assess the opportunity to develop a final proposal on the whole project or on parts of it.

CLICCA QUI

BACK TO MAP

SYNTHETIC SITE FILE EN

COMPLETE SITE FOLDER

SITE VISIT +

SITE ON GOOGLE MAPS

THIS SITE IS CONNECTED TO THE FOLLOWING THEME

NETWORKED TERRITORIES +



5

THEMATIZED PROJECTS | IMPLEMENTATION PROCESSES | EXCHANGES | PUBLICATIONS | SESSIONS INFO | ABOUT | CREDITS |    EN | FR

TOPIC | **SITES** | RULES | REGISTRATION | ENTRY | CALENDAR | JURIES | QUESTIONS | CONTACTS | NATIONAL WEBSITES | SIGN OUT

Venezia (IT) **SEI ARRIVATO!**

COMPLETE SITE FOLDER

- 0-New_docs_after_launch (0)
- 1-Conurbation (2)
 - 11-Aerial_and_semi_aerial_pictures (2)
 - [VENEZIA-IT-C-AP1.jpg](#) Mar 16, 2013 6:14:34 AM
 - [VENEZIA-IT-C-AP2.jpg](#) Mar 15, 2013 7:58:51 AM
 - 12-Maps (10)
 - [VENEZIA-IT-C-M1-dxf.zip](#) Mar 15, 2013 11:37:20 AM
 - [VENEZIA-IT-C-M1.dwg](#) Mar 15, 2013 11:26:11 AM
 - [VENEZIA-IT-C-M1.pdf](#) Mar 15, 2013 11:23:56 AM
 - [VENEZIA-IT-C-M2.pdf](#) Mar 15, 2013 11:20:03 AM
 - [VENEZIA-IT-C-M3.pdf](#) Mar 17, 2013 2:37:44 PM
 - [VENEZIA-IT-C-M4.jpg](#) Mar 17, 2013 2:52:26 PM
 - [VENEZIA-IT-C-M5.jpg](#) Mar 17, 2013 3:25:01 PM
 - [VENEZIA-IT-FILESLIST.pdf](#) Mar 26, 2013 12:19:37 PM
 - [ctb-european12_ML.ctb](#) Mar 14, 2013 1:55:10 PM
 - [header_VE.jpg](#) Mar 15, 2013 6:15:46 AM
- 2-Strategic_site (3)
 - 21-Aerial_and_semi_aerial_pictures (3)
 - [VENEZIA-IT-SS-AP1.jpg](#) Mar 17, 2013 1:06:00 PM

BACK TO SITE

SYNTHETIC SITE FILE EN

COMPLETE SITE FOLDER

SITE VISIT +

SITE ON GOOGLE MAPS

THIS SITE IS CONNECTED TO THE FOLLOWING THEME

NETWORKED TERRITORIES +

