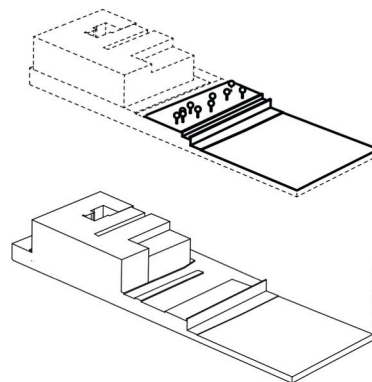


re-naturalization of the first cove

This area has been made even more green, through the intensification of the green areas, equipped with seating, lighting and dining areas, as well as taking shape center of attraction in which swimming and nature come together in a unique urban space, where the natural flow of rainwater along the river bed emphasizes the close relationship between inland and the sea. The element of union and between tradition and innovation is represented by former marine colony, a strategically located hub.

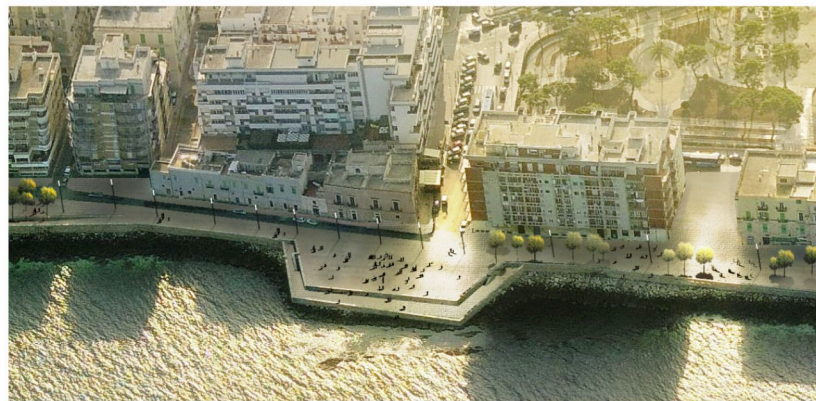
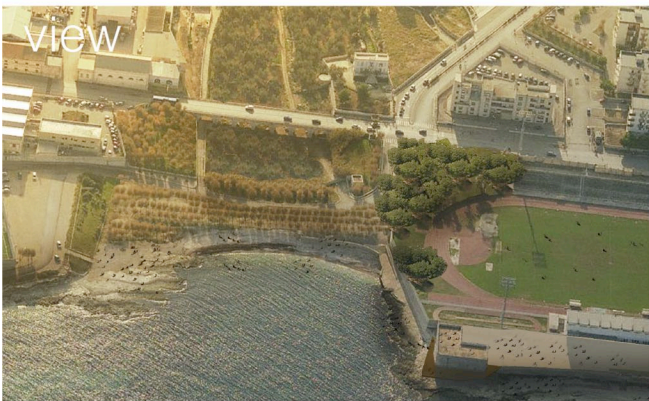
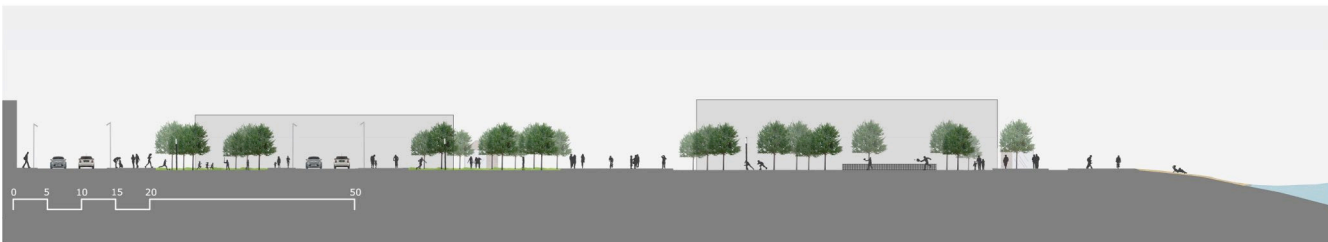
sports area

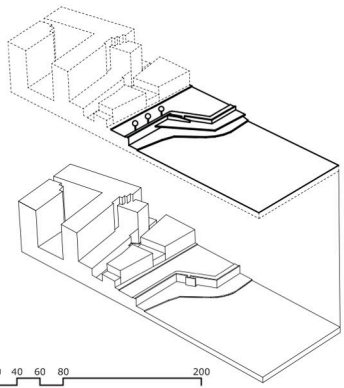
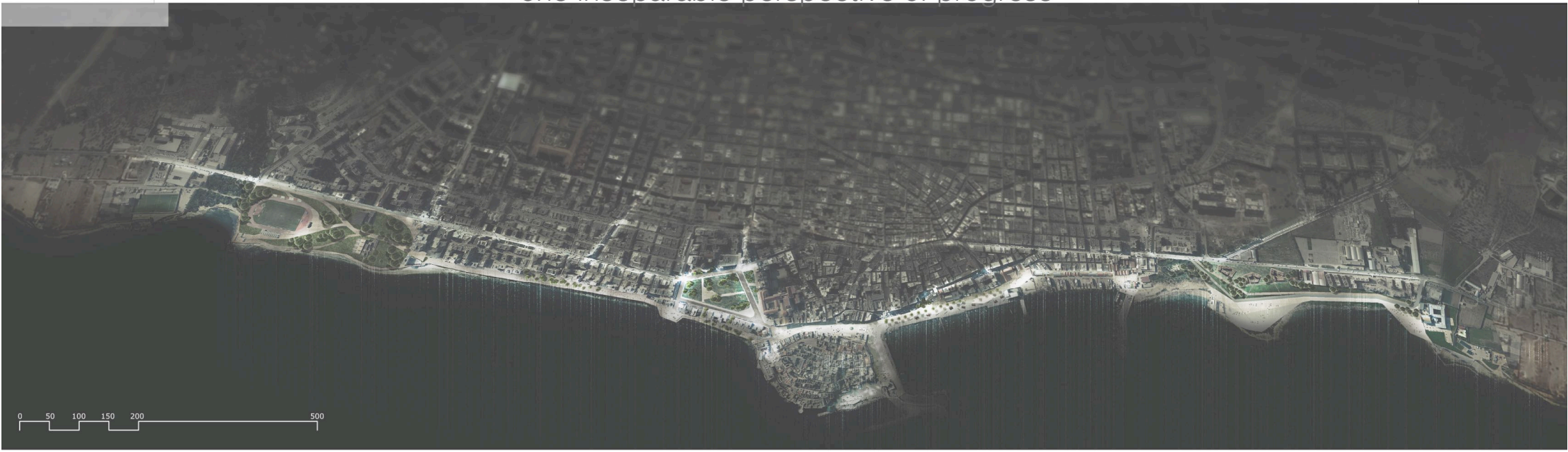
The area adjacent to the first cove has a sporty and recreational function, as evidenced by the analysis of already existing structures, such as the sports field, municipal swimming pool, tennis courts. In order to enhance this identity, it is expected the total elimination of the barriers linked to practicability and permeability of these areas, building a "city of sport" closely related to the bathing area, and the installation of some temporary sports facilities, built with environmentally friendly materials (bamboo, recycled wood) that include "booth" or "hut" like type structures



direct relationship with the sea

Element of weakness that characterizes the western : front is the road section in which the width of the road the lack of tourist facilities and the diversity of reside buildings make a waterfront fragmented in which the of protection from the sea denies direct visual relation with it. From that critical issue, we tried to set up a new meability of this space through the design of a new long dinal section, digging a sort of a "bench" in the area of current pedestrian traffic. In this way, s i is created kin "tank" where you can sit and admire a direct and nai sea, a resting place, that is no more only a simple wall. By respecting the principles of environmental sustaina characterizing the whole project intervention, a "stitch unstitched" system was designed, that disassembles current wall/barrier and proposes it as a sitting / overlook area; two extremely antithetical concepts, resolved wi single non-invasive gesture, in which the problem itself comes the solution.

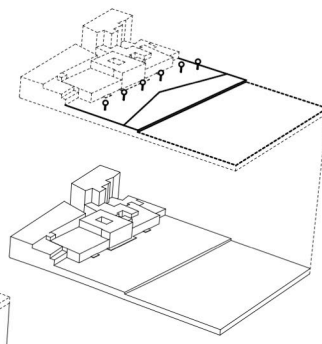
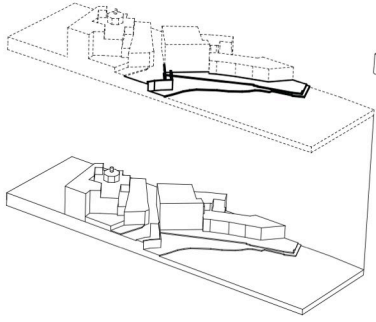




reconnect with the old town

Particular importance is attributed to the urban spaces that will be created between existing residential buildings and resettlement pedestrian and vehicle entrance to the Promenade Colonna. In fact, they will be characterized as resting places, widening or narrowing, which accommodate some structures made according to the scheme and the type already identified as a "hut", that are environmentally neutral.

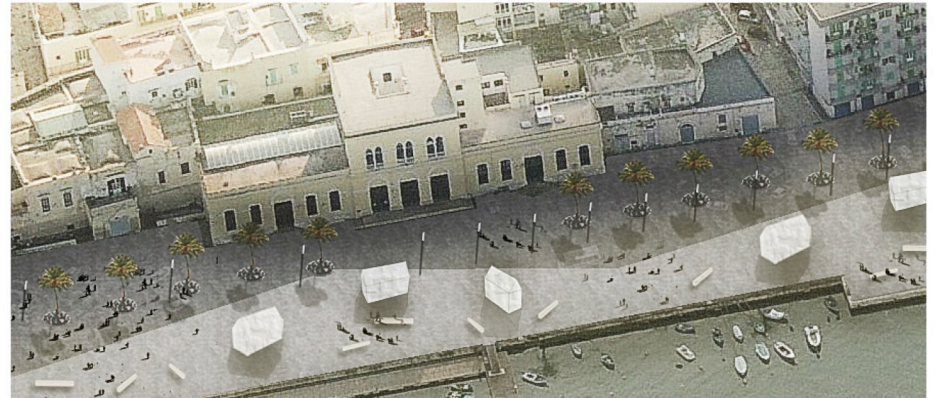
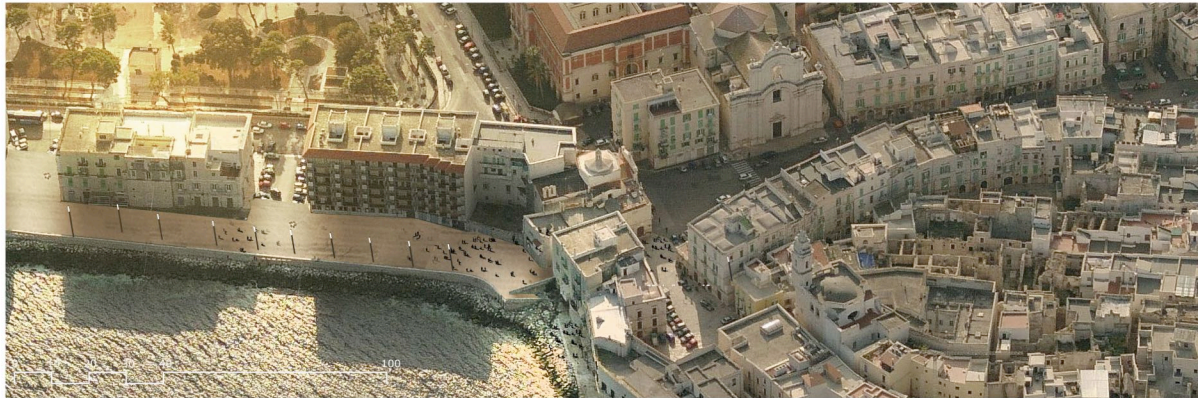
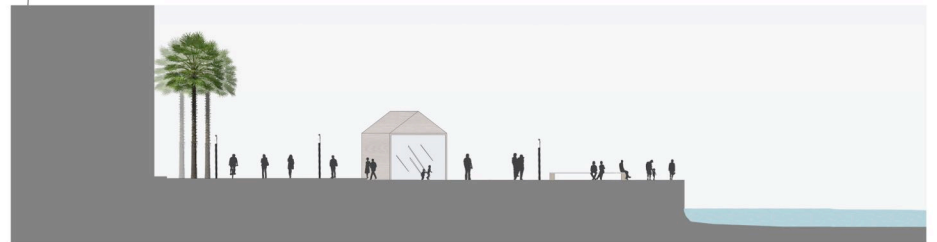
This way it is possible to enrich the offer, make it more attractive and encourage the use of such areas. Continuing on the seafront, there would be a reformulation of the Garibaldi square, creating parking spaces available to nearby buildings, closely associated with the square. This "green lung", connected with the adjacent sea, has a strong tendency of touristic appeal; and is the closing element of the walk that starts from the first cove and connects with the historical center through the Sala dei Templari, which defines the point of union.



enhancement of the waterfront

Along the new road, which is parallel to the buildings of the shipyard, you get close to the dock San Domenico, more urban area, to be strengthened through a new arrangement of roads, making pedestrian the whole side seafront. In this way it makes the area look more attractive and receptive, while guaranteeing an adequate parking for the market in this area.

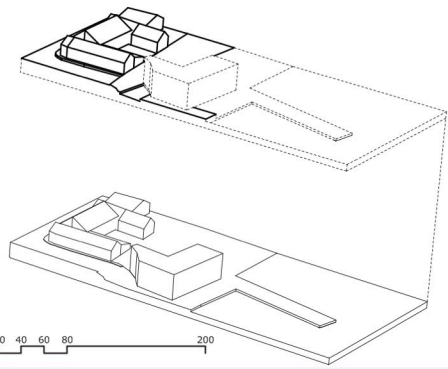
The square, in fact, it will be treated with different types of paving and in the front there will be suitable spaces prepared to be used as car parks. In parallel to this place, temporary structures are located, of the "hut" type, where recreational activities and accommodation can be hosted, in order to make this urban space very versatile throughout the day. In addition, a different type of flooring and the placement of palm trees will make a uniform reconnected area with the historic city center, a hinge connecting the front of the East to the one of the West.



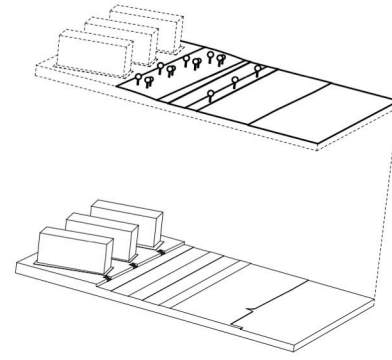
**enhancement shipyards**

After passing the "preserved" nature of the river bed, you are in the vicinity of the second historic core of Molfetta, the productive and vitally directly connected to the art of seamanship. It has a clear and well-established identity, in which the relationship with the sea defines the most representative element. It is therefore sought to maintain this same cross ratio, but without creating a barrier to the journey along the west coast (Ponente). Through the reuse of a part of these existing structures to be used as "educational" naval museum, you can open to the public with this reality with strong local roots in order to create attractive mechanisms and polarization, associated with the sharing of knowledge of the masters of Molfetta.

With a respectful attitude for the pre-existing, but pointing to its enhancement through techniques and modern technology, there have been completed the missing areas close to the sea, with structures similar to the current, with the same shape and orientation, but highly permeable through the use of materials such as steel and glass, so as to ensure the visual contact with the sea and make the intervention distinguishable compared to the existing one. In the internal zone there is also a square, a meeting place for tourism and history, between the present and the future.



0 20 40 60 80 200

**integration with residential buildings**

The project, therefore, involves the construction of a terraced path absorbed in a green that has a number of themes (children's area, sports area, relaxation area), which fit perfectly with the housing in the area. This has reduced the size of the track, while preserving its double journey forward / return. Within the bulging obtained, which allow greater permeability and expansion of space are inserted structures of eco sustainable materials - that define the leitmotif of the project proposal - for service related to religious and touristic activities.

A system of cross connections along the longitudinal system of traffic was also designed, which allows you to connect with the current area of PIRP, making it strongly connected to a pivotal axis such as tourism / religious, and a bike path, the trade union of the entire city.

In the current head of the housing PIRP, it was placed a settlement / receptive with the intent to fulfill a request seasonal housing tied to tourism and to the religious vocation of the site. The structure intervention will be set to have impact and high climate efficiency.

